

Ag-PT 103

Contents	(Weight / weight)%	claw
iron (FE)	≈13	EDTA

Organic iron 13% chelated with the organic EDTA to treat iron deficiency in plants, it is characterized by easy absorption and dissolution and rapid effect on plants.

The crop	Usage rate	Notes
Exposed vegetables	1.5 kg / 10,000 m ²	It is used before planting, and it is used as a spray on the leaves when a deficiency or need
Green houses	200-100 g / 1000 m ²	
Fruit trees	2.5-1.5 kg / 10,000 m ²	It is used before planting
Field crops and green fodder	1.5 kg / 10,000 m ²	It is used early in the season

Physical and chemical properties:

- **PH:** %4.4-3.5
- **Electrical conductivity:** 0.8-1.2 ms/cm at 20°

Packaging:



25 kg



10 kg



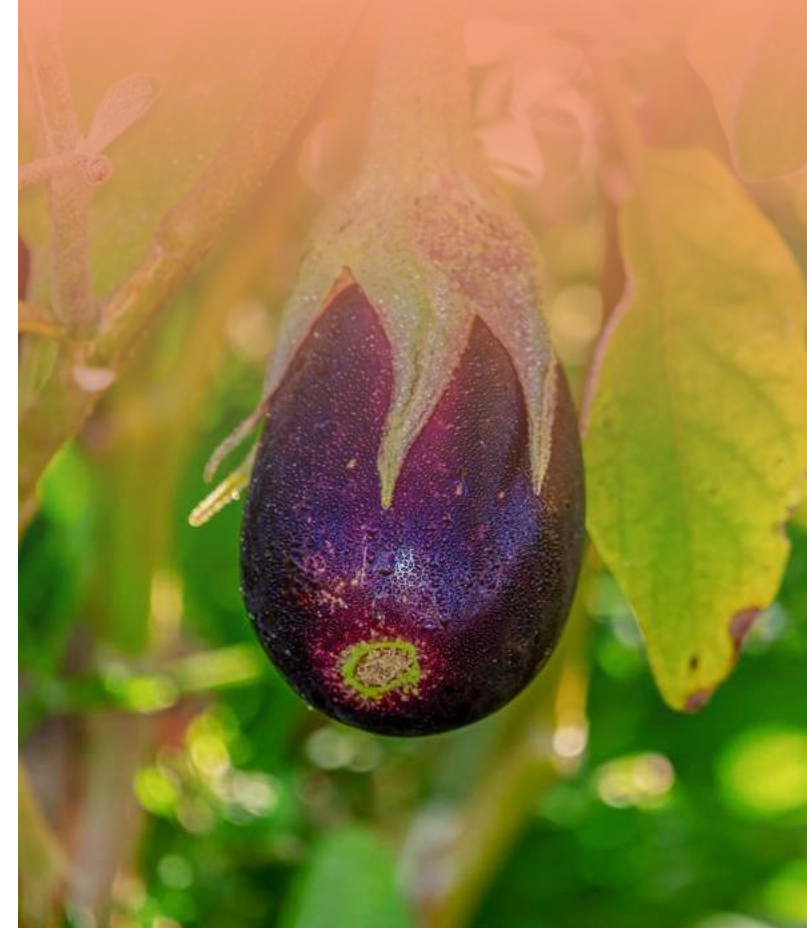
5 kg



1 kg



* The formula can be tailored to suit your crops



Specification and advantages:

- Treating iron deficiency very efficiently.
- Fertilizer fully soluble in water.
- Chelated on EDTA.
- It can be used in all irrigation Systems.